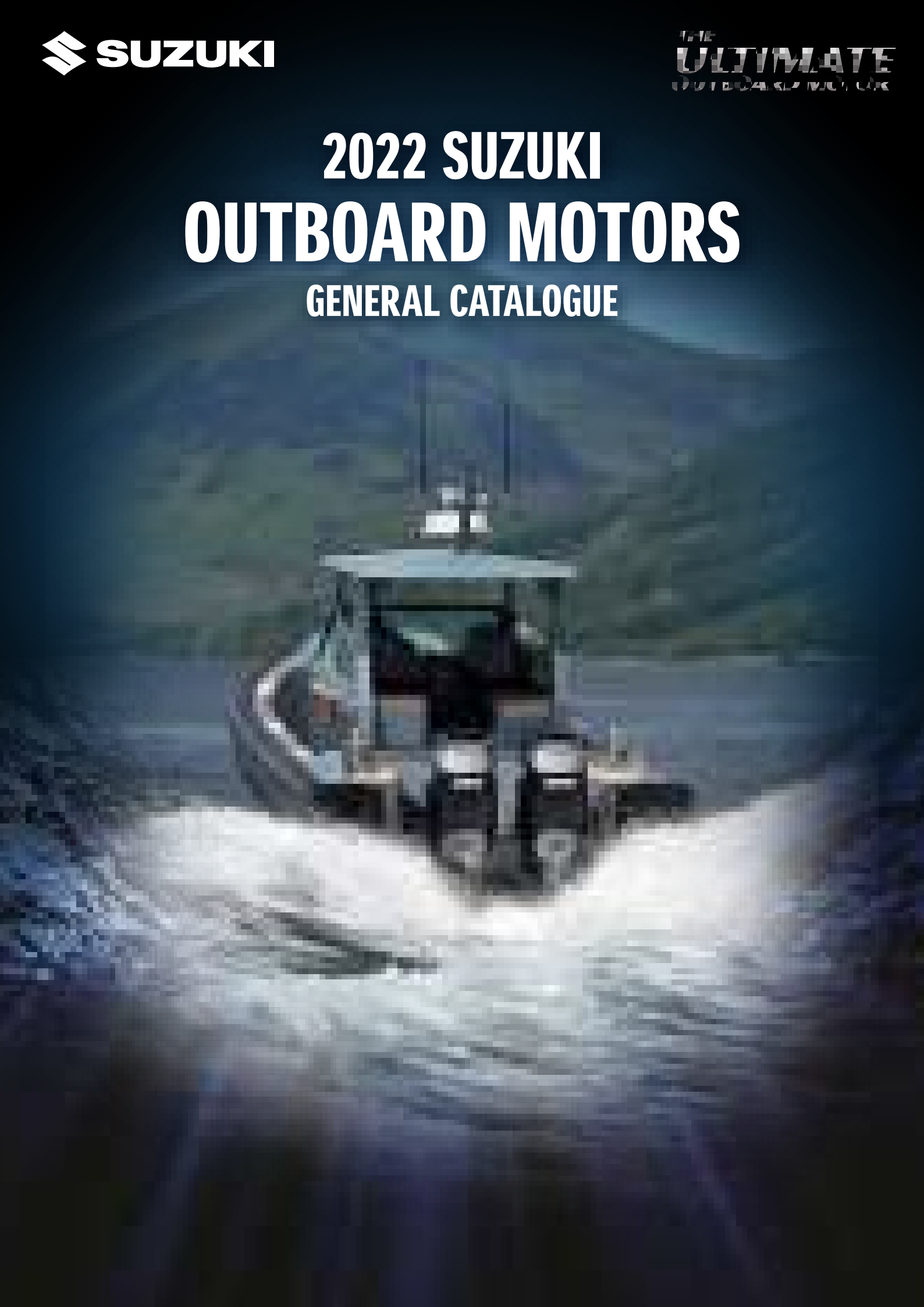




THE
ULTIMATE
OUTBOARD MOTOR

2022 SUZUKI OUTBOARD MOTORS

GENERAL CATALOGUE



SUZUKI CLEAN OCEAN PROJECT

As the world's ULTIMATE OUTBOARD MOTOR brand, Suzuki always remains focused on providing the ultimate marine experience, which requires a healthy and clean marine environment. Since 2011, we have been voluntarily conducting the "Clean-Up the World Campaign" every year to contribute to a better marine environment and more than 8,000 people have participated. In Japan, the campaign has been officially recognized by the Ministry of the Environment in the "Plastic Smart Campaign".

To continue to make our utmost effort for environmental protection, it is now time for us to review how we have been contributing to the environment and society and newly determine our direction. As well as continuing our worldwide clean-up campaign, we will also commit to take responsible actions against plastic waste problems. This is how we came to make the new Slogan and Logo, "SUZUKI CLEAN OCEAN PROJECT", To show the world our commitment.

Our Commitments

1. Clean-Up the World Campaign
2. Reduce Plastic Packaging
3. Collect Marine Micro-Plastic Waste



We believe the actions Team Suzuki takes around the world will be one positive step forward to a cleaner marine environment.

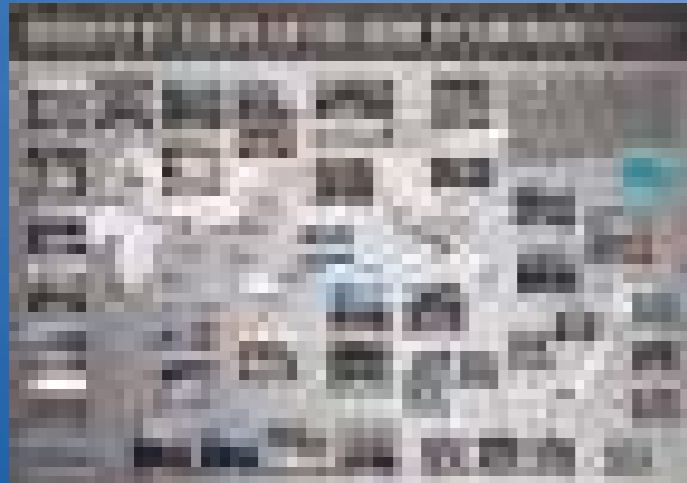
CONTENTS

4-5	SUZUKI CLEAN OCEAN PROJECT
6-11	SUZUKI ULTIMATE TECHNOLOGY
12-13	High Performance & User Friendly 140/115HP Model
14-15	Suzuki's Drive By Wire Series
16-17	Flagship-GEKI Series DF350A/325A/300B
18-19	V6 300-200HP DF300AP/250AP
20-21	IN-LINE 4 200-150HP DF200AP/175AP/150AP
22-23	IN-LINE 4 140-70HP DF140BG/115BG DF140B/115B DF100B/90A/80A/70A
24-25	IN-LINE 3 60-25HP DF60AV DF60A/50A/40A DF30A/25A
26-27	PORTABLE 20-2.5HP DF20A/15A/9.9B DF9.9A DF6A/5A/4A DF2.5
30	Integrated Control System "SYNCRO-EYE"
31-34	PARTS & ACCESSORIES
35	ECSTAR OIL
36-37	HISTORY
38-43	FEATURES & SPECIFICATIONS

SUZUKI CLEAN OCEAN PROJECT

1. CLEAN-UP THE WORLD CAMPAIGN

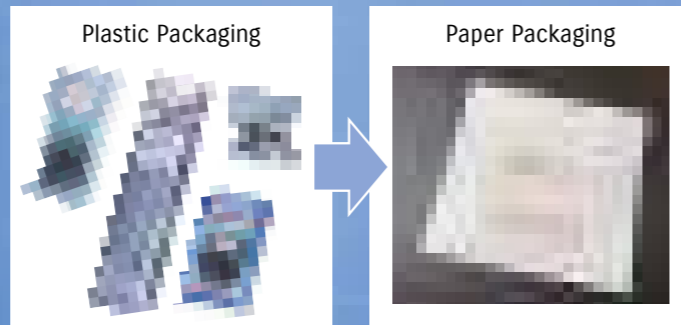
More than 8,000 people from 26 Suzuki distributors participated in this activity.



2. REDUCE PLASTIC PACKAGING

Approximately 2.3 tons of plastic will avoid being used every year if all packaging of marine genuine parts are replaced to eco-friendly materials.

Packaging for Suzuki marine genuine parts



Reduce plastic 2.3t / year*

*Estimated amount when adapted to all parts

3. COLLECT MARINE MICRO-PLASTIC WASTE

How can Suzuki use its products to reduce marine micro-plastic waste?

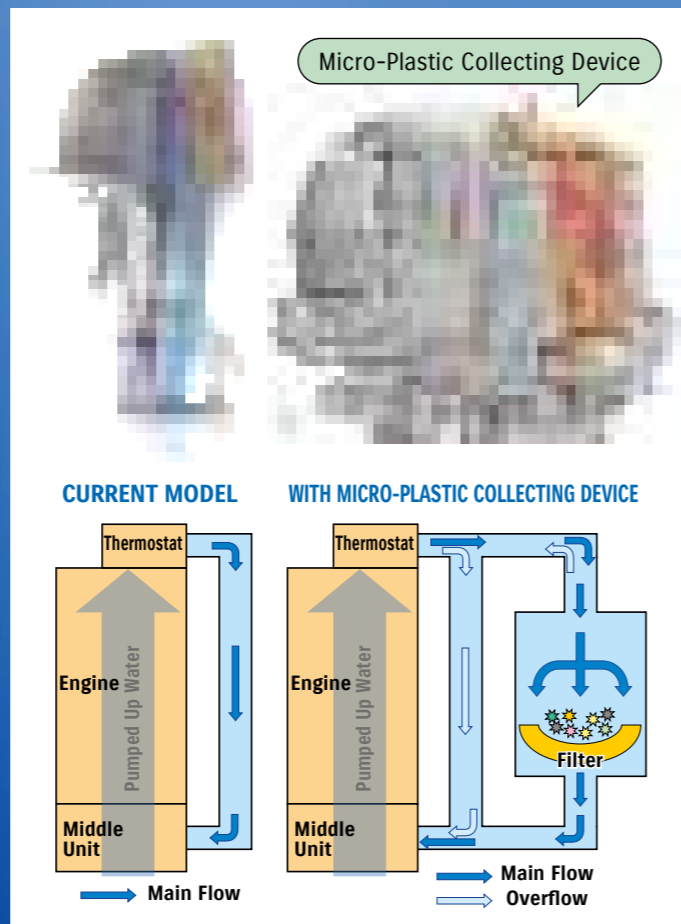
Are there any ways to tackle the problem without sacrificing the performance of the engine nor harming the environment?

As a solution to this challenge, we came up with an idea which is the Micro-Plastic Collecting Device.

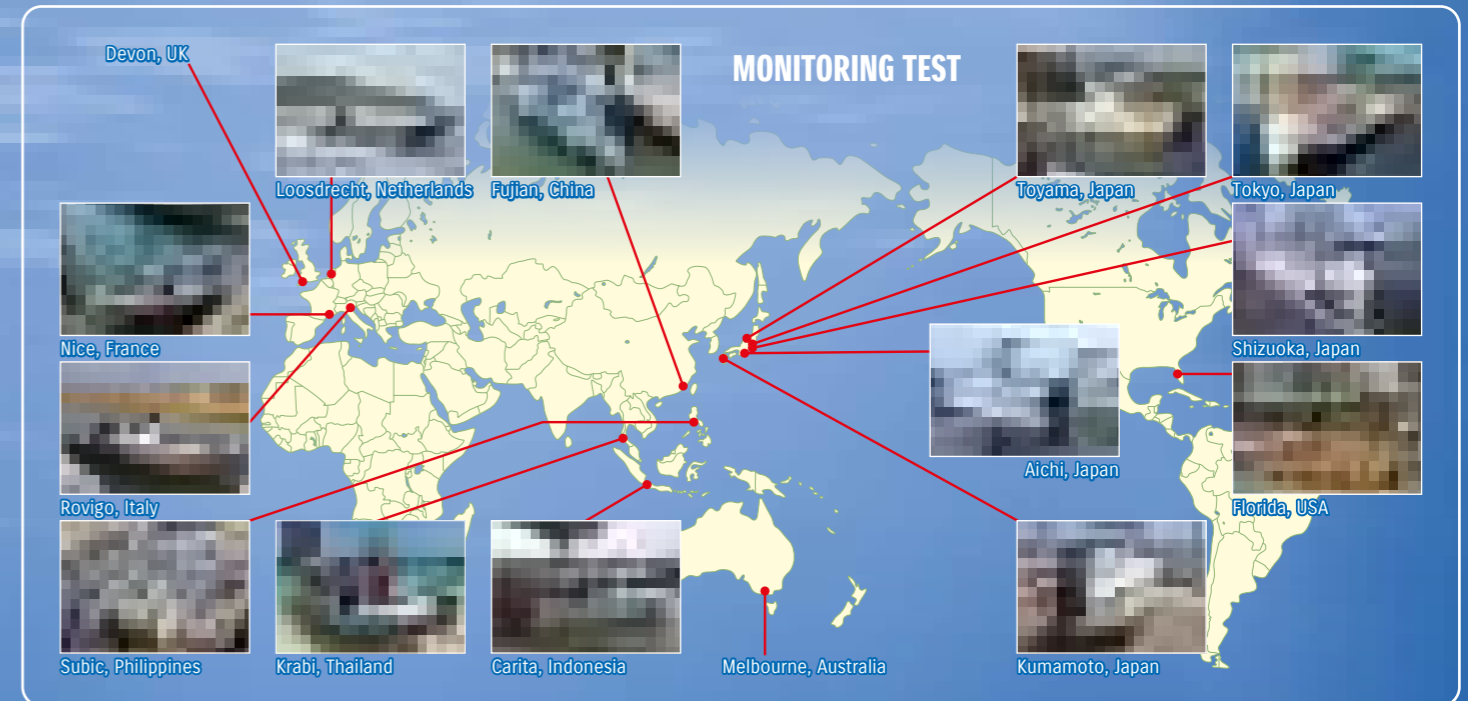


FEATURES

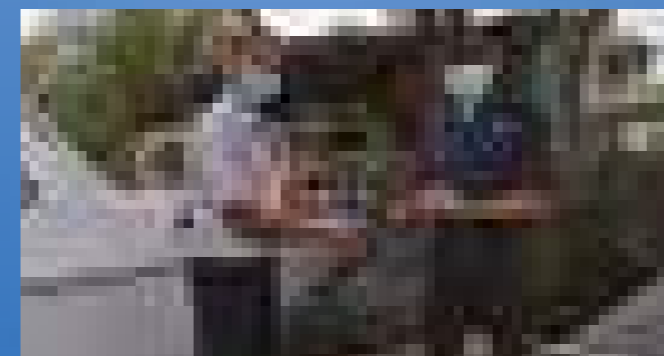
- Easy installation of Return hose and Filter
- This device will not affect the performance of the engine even if the filter get clogged since this device utilizes the used cooling water.



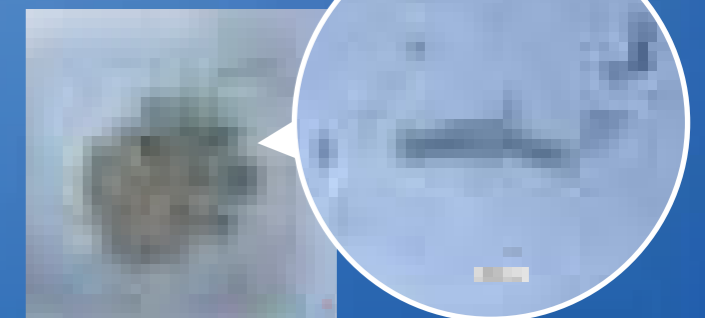
MICRO-PLASTIC COLLECTING DEVICE* MONITORING REPORT



MONITORING TEST RESULTS IN THE PHILIPPINES



COLLECTED MATERIALS



Model: DF115A

Cooperation: the Municipality of Subic

Operation Hours: 125 Hours

Comment from the officer of the municipality: "We are grateful to Suzuki Outboard Philippines for choosing Patrol Boats on your Micro Plastic Collecting Device pilot project. I understand that the development of the device will put Suzuki Outboards in the frontline of environmental protection."

*Micro-Plastic Collecting Device will be available as optional part for DF140BG/115BG and DF140B/115B in 2022.

After the announcement of micro-plastic collecting device, we received a lot of positive comments and requests to join the monitoring research.

We believe our small actions will be a big movement to change the serious situation of marine environment.

Thus, Suzuki will continue to gather data and try to improve the efficiency of collecting micro-plastic.

In order to clean the ocean, the Suzuki Marine Team will promote "SUZUKI CLEAN OCEAN PROJECT" together with partners and boat users all around the world.

LEADING THE INDUSTRY WITH AWARD WINNING TECHNOLOGIES AND DESIGNS, SUZUKI OUTBOARDS PROVIDE FEATURES AND BENEFITS THAT MAKE BOATING EVEN MORE ENJOYABLE

THE ULTIMATE OUTBOARD MOTOR

Durability & Reliability	Performance	Ease & Comfort	Ecology & Economy
<ul style="list-style-type: none"> Durable Notify user before engine trouble Easy to service, repair 	<ul style="list-style-type: none"> Smooth and quick acceleration at all operating ranges Powerful torque 	<ul style="list-style-type: none"> Less vibration Quiet operation Light & Compact Easy to use Smooth and Decisive shifting 	<ul style="list-style-type: none"> Good fuel efficiency / low emission Low maintenance cost Environment protection activities
DUAL LOUVER WATER DETECTING SYSTEM SELF-ADJUSTING TIMING CHAIN TILT LIMIT ANTI CORROSION DUAL WATER INLET KEYLESS START SYSTEM SUB WATER INLET SDSM	OFFSET DRIVESHAFT DUAL PROP MULTI-STAGE INDUCTION 2.50 GEAR RATIO HIGH ENERGY ROTATION VVT VARIABLE VALVE TIMING DIRECT INTAKE	SELECTIVE ROTATION QUIET OPERATION PRECISION CONTROL THREE-WAY STORAGE OVERHEAD TANK TROLL MODE AUTOMATIC TRIM EASY START SYSTEM	LEAN BURN DUAL INJECTOR LESS BATTERY-LESS FUEL INJECTION SUZUKI CLEAN OCEAN PROJECT

Durability & Reliability



SUZUKI DUAL LOUVER SYSTEM

▶DF350A/325A/300B

DF350A/DF325A/DF300B is equipped with a dog leg shaped dual louver at the air intake to remove water from the air taken into the cowl.

ADVANTAGE

- Prevents water from entering the outboard.
- Allows a direct intake system, contributing to higher engine output.



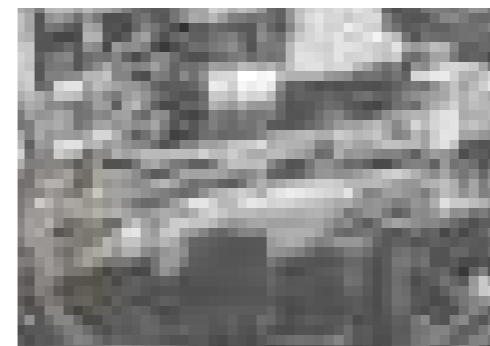
SELF-ADJUSTING TIMING CHAIN

▶DF40A AND UP

The timing chain runs in an oil-bath so it never needs lubricating, and is equipped with an automatic hydraulic tensioner so it remains properly adjusted at all times.

ADVANTAGE

- More durability compared to belt types of same class.
- Maintenance-free.



WATER DETECTING SYSTEM

▶DF70A AND UP

It helps to prevent water from the engine by using a "water detecting fuel filter".

Also, this system will alert the driver with visual and audio warnings when water is getting into the fuel.

ADVANTAGE

- Prevents water in fuel, which can be the cause of issues like poor combustion, lower power output and corrosion.



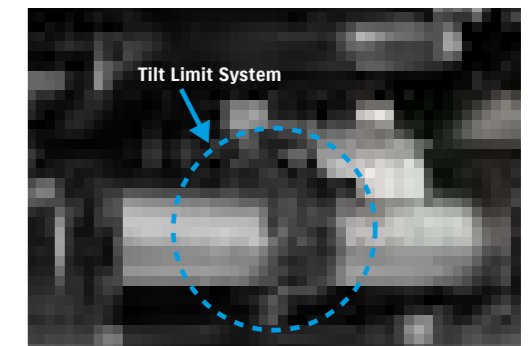
TILT LIMIT SYSTEM

▶DF60AV AND UP (Not including DF50A/40A)

Tilt Limit System prevents the outboard from tilting beyond a selected angle.

ADVANTAGE

- Prevents damage to the boat or outboard due to excessive outboard tilting.



NMMA Award

The Innovation Awards (recognizing technological innovation) granted each year by the NMMA (National Marine Manufacturers Association) are considered among the highest honours in marine technology. Of the new marine industry products in that year, they are awarded to "a product that shows technical leadership, is practical and cost-effective, and is truly beneficial to the consumer."

Starting with the DT200 Exanté in 1987 and extending to the DF350A in 2017, Suzuki outboard motors have received this Innovation Award a total of nine times. Eight of these awards are for 4-stroke outboard motors, which is the largest number of awards in the engine category in the industry.



Awarded Prizes

1987: DT200 Exanté / 1997: DF70 & DF60 /
 1998: DF50 & DF40 / 2003: DF250 /
 2006: DF300 / 2011: DF50A & DF40A / 2012: DF300AP /
 2014: DF30A & DF25A / 2017: DF350A



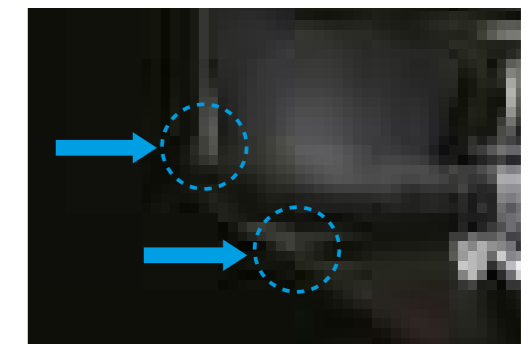
DUAL WATER INLET

▶DF350A/325A/300B ▶DF300AP/250AP

The engine's cooling system relies on water supplied through two water inlets located on the lower unit.

ADVANTAGE

- Increases the water flow, providing better cooling performance.



DF350A



SUB WATER INLET

OPTIONAL: ▶DF140BG/115BG DF140B/115B
DF140A/115A
STANDARD: ▶DF60A/50A/40A

Two water inlets in different directions ensure that the engine does not overheat due to the clogging of algae.



NEW KEYLESS START SYSTEM

OPTIONAL: ▶DF350A/325A/300B ▶DF300AP/250AP
▶DF200AP/175AP/150AP ▶DF140BG/115BG

This system allows you to start the engine by having the key-fob nearby.

- One push Start & Stop is available
- Available to control up to 6 outboards
- Waterproof Float Key Fob
- Security Support with Immobilizer

ADVANTAGE

- Provides high security.
- No ignition key is necessary.



SUZUKI ANTI-CORROSION FINISH

▶ALL MODELS

Special protection is applied to the aluminium surface using high strength bonding to protect the aluminium made exterior parts.

ADVANTAGE

- Protection against corrosion helps increase the overall outboard durability.

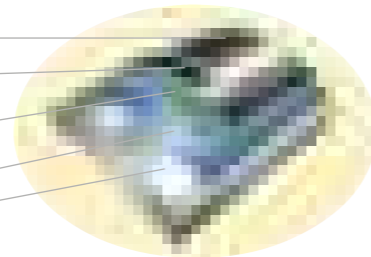
Resin Clear Topcoat

Resin Black (or White)
Basecoat

Primer Undercoat

Suzuki Anti-Corrosion Finish

Suzuki Aluminium Alloy



SDSM (SUZUKI DIAGNOSTIC SYSTEM MOBILE)

▶DF9.9B AND UP*

Available for free*, this service enables you to scan the QR code containing the engine information displayed on the Multi-Function Display or Multi-Function Gauge with your smart phone and send the information via email.

ADVANTAGE

- The SDSM App lets you send your authorized Suzuki dealer all the technical information they need to service and maintain your outboard motor instantly and easily.

* Suzuki Multi-function Gauge or Suzuki Multi-function Display and a smartphone running Android or iOS are required.



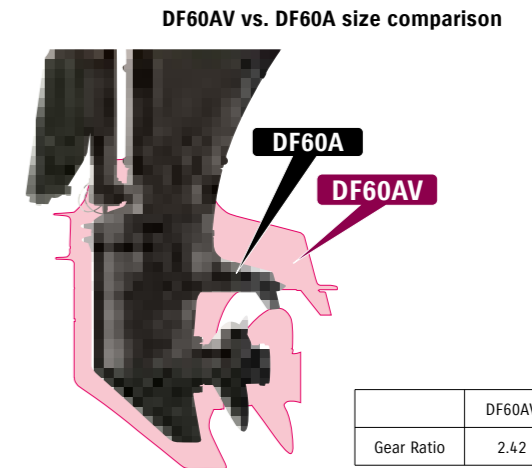
HIGH ENERGY ROTATION

▶DF60AV

These outboard motors are equipped with gears designed with a 2.42 gear ratio, which is larger than the standard model, in their lower units. When combined with a large 36cm (14-inch) propeller, the powerful system can deliver an explosive forward thrust. This is ideal for heavy boats.

ADVANTAGE

- Powerful navigation and precise manoeuvring even with big loads.
- Increased power to turn large diameter propellers, offering quick acceleration.
- Better hole shot.
- Superior low speed handling.



	DF60AV	DF60A
Gear Ratio	2.42	2.27



MULTI-STAGE INDUCTION

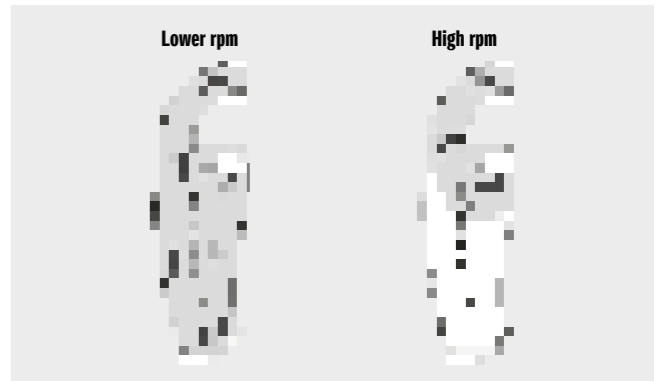
▶DF200AP/175AP/150AP

Manifold pipes are switched between short and long during low-speed and high-speed operation to ensure the right volume of air enters the engine.

ADVANTAGE

- Increases output during high-speed operation with greater volume of air input.
- Increases combustion efficiency and maximizes torque by increasing the density of the air intake during low-speed operation.

AIR FLOW IN MULTI-STAGE INDUCTION MODULE



Performance



OFFSET DRIVESHAFT

▶DF70A AND UP

The engine powerhead is positioned closer to the front, moving the outboard's centre of gravity forward.

ADVANTAGE

- Less vibration
- More compact
- Stable steering performance

1st Stage Reduction :
30:36=1.20

2nd Stage Reduction :
12:25=2.08

Total : 2.50:1

DF200AP



2-STAGE GEAR REDUCTION

▶DF70A AND UP

This system which incorporates the Offset Driveshaft features a first stage reduction between the crankshaft and drive shaft, and a second stage reduction inside the gear case. This design makes a larger gear ratio possible, allowing it to turn a large diameter propeller.

ADVANTAGE

- Increased power to turn large diameter propellers, offering quick acceleration.
- High propulsive efficiency with large diameter propeller.
- Powerful navigation, maintaining propeller rotation even with a larger load.

GEAR RATIO IN EACH CLASS

MODEL	DF140BG/115BG DF140B/115B DF140A/115A/ DF100B/90A/80A/70A	DF200AP/175AP/ DF150AP	DF300AP/ 250AP	DF350A/ 325A/300B
GEAR RATIO	2.59:1	2.50:1	2.08:1	2.29:1



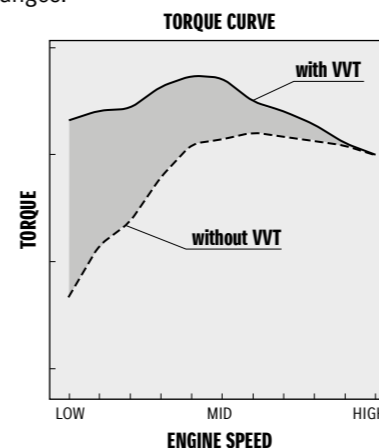
VVT (Variable Valve Timing)

▶DF350A/325A/300B ▶DF300AP/250AP
▶DF200AP/175AP/150AP

The Variable Valve Timing controls the opening and closing timing of the intake valve depending on the engine operation.

ADVANTAGE

- Offers smooth, powerful torque.
- Provides increased acceleration during operation for all speed ranges.



DIRECT AIR INTAKE

▶DF350A/325A/300B

Designing a direct airflow path from the intake port to the cylinder suppresses any increase in the intake temperature and improves combustion efficiency.

ADVANTAGE

- Delivers higher power output from a small displacement with improved combustion efficiency.





SUZUKI DUAL PROP SYSTEM

▶DF350A/325A/300B

The Suzuki Dual Prop System spins two propellers rotating in opposite directions on a single engine.

ADVANTAGE

- Achieve superior stability when driving straight by eliminating the lateral forces associated with a single propeller.
- Engine power is transferred to the water more efficiently.
- Powerful reverse thrust and braking force.
- Less water resistance due to the small size of the gear case.
- Good water gripping performance and quick acceleration.

Ease & Comfort



SUZUKI SELECTIVE ROTATION

▶DF300AP/250AP ▶DF200AP/175AP/150AP

Function for selecting regular or counter rotation on one outboard with an optional connector and a counter rotation propeller.

ADVANTAGE

- Either regular or counter rotation can be used on the same outboard.



QUIET OPERATION

▶DF350A/325A/300B ▶DF200AP/175AP/150AP
▶DF140BG/115BG ▶DF140B/115B

Intake noise is suppressed with a resonator, which makes the noise quieter.

ADVANTAGE

- Less noise, making boating more pleasant.



DF200A



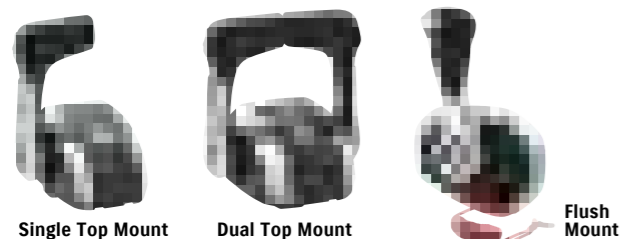
NEW SUZUKI PRECISION CONTROL (Electronic Throttle and Shift Systems)

▶DF350A/325A/300B ▶DF300AP/250AP
▶DF200AP/175AP/150AP ▶DF140BG/115BG

Operation from the remote control is delivered to the outboard via an electric signal and not by the traditional mechanical control cables.

ADVANTAGE

- Less friction and resistance compared to the mechanical type that uses actual control cables.
- Combined with the Lean Burn Control System, it offers improved fuel economy for a wide range of speed.
- Available to control up to 6 outboards.
- 1 lever operation for multiple outboards is available. (for dual top mount only)
- "SELECT" and "THROTTLE ONLY" switch are integrated into the controller.
- Automatic Trim system is available by using with SMG4/SMD.



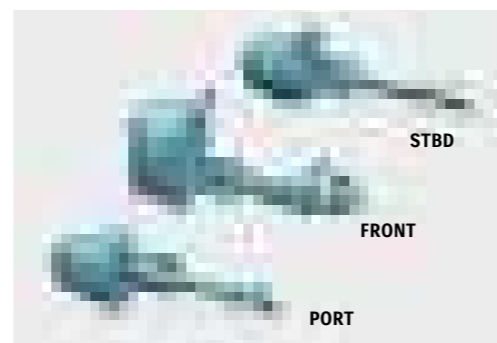
THREE-WAY STORAGE

▶DF6A/5A/4A

The design allows the outboard to be removed from the boat and placed on any of its 3 sides for storage.

ADVANTAGE

- No need to worry about the loading space or method.



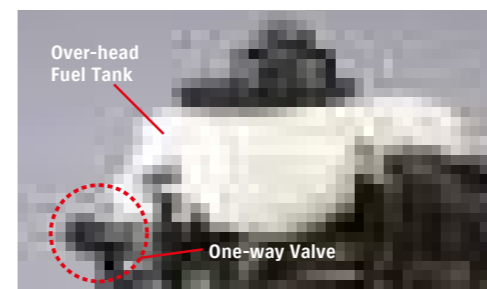
OVERHEAD TANK

▶DF6A/5A/4A

The integral overhead fuel tank and one-way valve delivers fuel supply by using gravity.

ADVANTAGE

- Contributes to easy start.



NEW AUTOMATIC TRIM

▶DF350A/325A/300B ▶DF300AP/250AP
▶DF200AP/175AP/150AP ▶DF140BG/115BG

The Automatic Trim adjust trim angle automatically depending on the engine RPM without your control.

ADVANTAGE

- This technology helps to keep appropriate position and contribute to achieve faster top speed and higher fuel efficiency.

*Available with SMD / SMG4



SUZUKI TROLL MODE SYSTEM*

▶DF40A AND UP
Optional for Remote Control Models

This system helps the boat running at a certain speed range in low revs.

ADVANTAGE

- Boat can keep running at a certain speed range in low revs without having to operate the throttle on the boat.
- Gives you highly precise control at low revs.

*Available with SMD, SMG4, or Troll Mode Switch Panel



SUZUKI EASY START SYSTEM

▶DF40A AND UP

Simply turn the key and release, and the starter stays engaged until the engine starts. This system offers a smoother start of the engine.

Ecology & Economy



LEAN BURN CONTROL SYSTEM

LEAN BURN

▶DF9.9B AND UP

The Lean Burn Control System supplies the appropriate amount of fuel and air mixture depending on the navigation conditions.

ADVANTAGE

- Significant improvement in fuel economy in all speed ranges especially at cruising speed.
- Fuel is saved and gasoline costs are cut thanks to improved fuel economy.



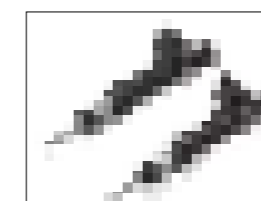
DUAL INJECTOR

▶DF350A/325A/300B

The dual injector delivers just the right amount of fuel at the right time into each cylinder.

ADVANTAGE

- Contributes to higher output and better fuel efficiency.



BATTERY-LESS ELECTRONIC FUEL INJECTION

▶DF30A/25A ▶DF20A/15A/9.9B

This technology delivers quicker start, smoother operation, and more acceleration without a battery.

ADVANTAGE

- Quick and easy start.
- Cleaner and economic fuel consumption.
- Higher and smoother performance in almost all operating ranges.
- Operates without battery.



SUZUKI CLEAN OCEAN PROJECT

SUZUKI CLEAN OCEAN PROJECT was created to show Suzuki's commitment towards reducing marine plastic waste.

- Clean-Up the World Campaign
- Reduce Plastic Packaging
- Collect Marine Micro-Plastic Waste

High Performance & User Friendly 140/115HP* Model

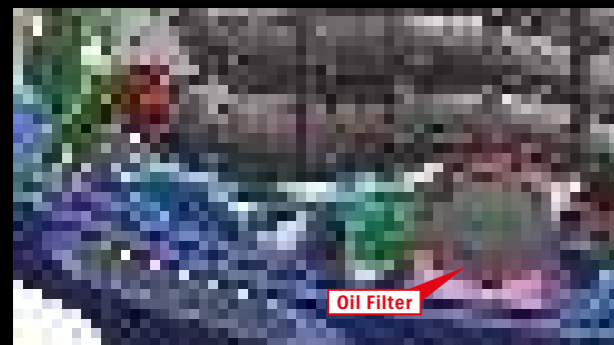
*140PS(103kw), 115PS(84.6kw)

Easy Maintenance

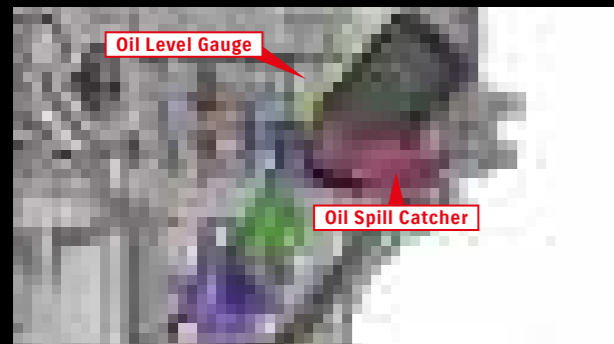
- Designed for customers to maintain easily

Advantage

- Easy access oil filter:
Can be replaced simply by removing the top cover
- Oil Spill Catcher:
A tray is added around the oil filter to catch oil which comes out when exchanging the oil filter
- Oil Level Gauge:
Able to use $\Phi 15\text{mm}$ oil changer hose



Easy access Oil Filter



Oil Spill Catcher & Oil Level Gauge



DF140BG

DF140B

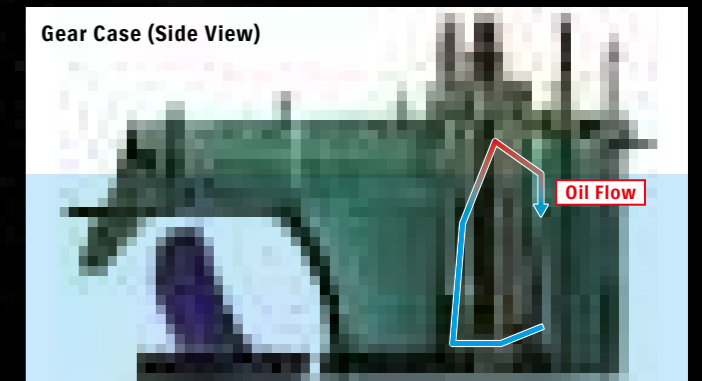
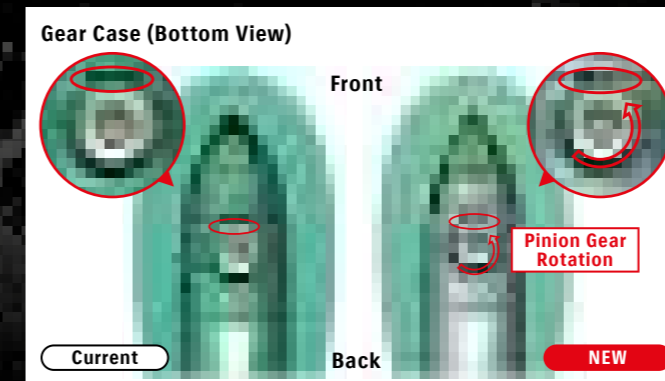
High Durability

Improved Gear Case

- By optimizing the gear oil passage, the spinning pinion gear generates negative pressure and it helps the gear oil circulate more efficiently.

Advantage

- It lowers gear oil temperature and cools the gear. So this gear case contributes to increasing the durability of pinion gear.



Additional Features for BG models

- Drive by Wire
- Good fuel efficiency
- New S.P.C.*1

New Keyless start system & Automatic Trim are available (optional*2)

*1 Suzuki Precision Control is a digital remote controller.

*2 Available with SMD or SMG4.



Suzuki's Drive By Wire Series

Taking your boating experience to a new level for your ULTIMATE marine life

Drive By Wire (Suzuki Precision Control : S.P.C) is a technologically advanced computer-based control system with electronic wiring that eliminates the source of friction and resistance. While you enjoy smooth throttle and shift operation, the system's computer is processing and transmitting commands in real-time to actuators at the engine that deliver precise throttle controls with smoother, decisive shifting.



Smooth Shift Operation

Easy Rigging

Fuel Efficient

Luxury Remote Control

ULTIMATE Line-up



DF350A

DF325A

DF300B

DF300AP

DF250AP

DF200AP

DF175AP

DF150AP

DF140BG

DF115BG

V6 350-300HP Flagship-GEKI Series

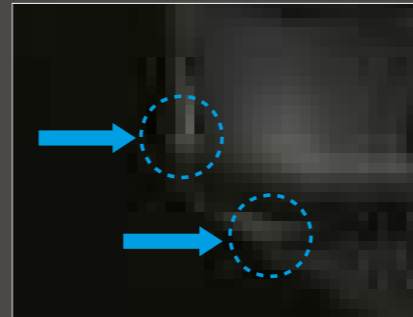
◆ Drive By Wire DF350A / DF325A / DF300B

THE ULTIMATE OUTBOARD MOTOR



SUZUKI DUAL LOUVER SYSTEM P7

The DF350A/DF325A/DF300B is equipped with dual louver at the air intake to remove water from the air taken into the cowl. Incorporating a direct intake system makes the highest compression ratio of 12.0:1 (DF350A), 10.5:1 (DF325A/DF300B) possible, ultimately leading to a higher engine output.



DUAL WATER INLET P7

The engine's cooling system relies on water supplied through low water intakes located on the lower unit. This dual water inlet configuration increases water flow into the lower unit, delivering greater cooling efficiency. Positioning the forward inlet by the gear case nose delivers a greater water supply, especially at high speeds. The second inlet is positioned lower, allowing the DF350A/DF325A/DF300B to operate in shallow water.



SUZUKI DUAL PROP SYSTEM P10

The dual prop system efficiently turns DF350A/DF325A/DF300B horsepower output into propulsion under water. As an added benefit, because each propeller rotates in a different direction, exceptional stability is achieved. In addition, the counter-rotating propellers produce a strong reverse thrust.



DUAL INJECTOR P11

Dual injectors deliver just the right amount of fuel at just the right time into the cylinder. This dual injector contributes to higher output and better fuel efficiency.



ANTOINE GUILLOU

SMD12 P33

Big screen navigation for large boats. The SMD12 allows you to choose the screen size that best matches your helm or bridge needs. You can build your system with the best sensors and technologies to suit your needs.



DF350A DF325A DF300B

DRIVE BY WIRE



GEKI: PARTING SEAS

A Force to Match the Power of Nature and the Sea Representing Suzuki's Identity and Heritage. A Symbol of Our Passion and Commitment to the Ultimate in Marine Innovation.

* "GEKI: PARTING SEAS" is the logo that represents the DF350A, DF325A and DF300B

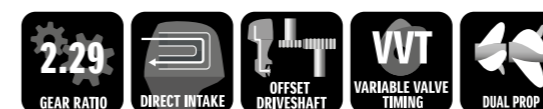
Durability & Reliability



Ecology & Economy



Performance



Ease & Comfort



*1 Available with SMD or SMG4

*2 Available with SMD, SMG4, or Troll Mode Switch Panel

SPECIFICATIONS / FEATURES P38

V6 300-200HP

◆ Drive By Wire DF300AP / DF250AP

THE ULTIMATE
OUTBOARD MOTOR



DF300AP DF250AP

DRIVE BY WIRE

Increased Alternator Output at Low Speed

Ideal for today's power-hungry fishing boats that spend a lot of time trolling

Applicable models : V6 models (DF350A-DF200)

ADVANTAGE

- Increased alternator output at idle and low speed.
- Enables the use of more electric pumps, equipment.

At Idling Speed	18A → 28A	156%
At Idle in Gear	23A → 33A	143%
At 1,000rpm	38A → 43A	113%

STANDARD FEATURES

Durability & Reliability

ANTI CORROSION ALL MODELS	SELF-ADJUSTING TIMING CHAIN ALL MODELS	WATER DETECTING SYSTEM ALL MODELS	TILT LIMIT ALL MODELS	SDSM (OPTIONAL *1) ALL MODELS
------------------------------	---	--------------------------------------	--------------------------	----------------------------------

Performance

2.08 GEAR RATIO DF300AP DF250AP	OFFSET DRIVESHAFT ALL MODELS	VVT VARIABLE VALVE TIMING DF300AP DF250AP
---------------------------------------	---------------------------------	---

ADDITIONAL FEATURES FOR DRIVE BY WIRE MODEL

Durability & Reliability

DUAL WATER INLET DF300AP DF250AP	KEYLESS START SYSTEM (OPTIONAL) DF300AP DF250AP
--	---

Ease & Comfort

SELECTIVE ROTATION DF300AP DF250AP	PRECISION CONTROL (OPTIONAL *2) DF300AP DF250AP	TROLL MODE (OPTIONAL *2) DF300AP DF250AP	EASY START SYSTEM DF300AP DF250AP	AUTOMATIC TRIM (OPTIONAL *2) DF300AP DF250AP
--	---	--	---	--

Ecology & Economy

LEAN BURN DF300AP DF250AP

*1 Available with SMD or SMG4

*2 Available with SMD, SMG4, or Troll Mode Switch Panel

SPECIFICATIONS / FEATURES P38

Flagship-GEKI SERIES
V6 300-200HP
IN-LINE 4 200-150HP
IN-LINE 4 140-70HP
IN-LINE 3 60-25HP
PORTABLE 20-2.5HP
CARGO SERIES

IN-LINE 4 200-150HP

◆ Drive By Wire DF200AP / DF175AP / DF150AP

THE ULTIMATE OUTBOARD MOTOR



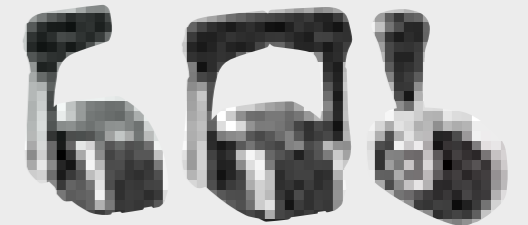
DF200AP / DF175AP / DF150AP

DRIVE BY WIRE

NEW SUZUKI PRECISION CONTROL (S.P.C.)

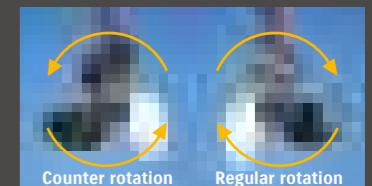
ADVANTAGE

- Available to control up to 6 outboards.
- 1 lever operation for multiple outboards is available. (for Dual Top Mount only)
- "SELECT" and "THROTTLE ONLY" switch are integrated into the controller.
- Automatic Trim System is available by using with SMD or SMG4.



SUZUKI SELECTIVE ROTATION

P10



Function for selecting standard or counter rotation on one outboard with an optional connector.

QUIET OPERATION

P10

Intake noise is suppressed with a resonator, which reduces sound levels and improves the boating experience.

STANDARD FEATURES

Durability & Reliability

ANTI CORROSION ALL MODELS	SELF-ADJUSTING TIMING CHAIN ALL MODELS	WATER DETECTING SYSTEM ALL MODELS	TILT LIMIT ALL MODELS	SDSM (OPTIONAL*1) ALL MODELS	KEYLESS START SYSTEM (OPTIONAL) ALL DBW MODELS
------------------------------	---	--------------------------------------	--------------------------	------------------------------------	--

Performance

OFFSET DRIVESHAFT ALL MODELS	2.50 GEAR RATIO ALL MODELS	MULTI-STAGE INDUCTION ALL MODELS	VARIABLE VALVE TIMING ALL MODELS
---------------------------------	-------------------------------	-------------------------------------	-------------------------------------

Ease & Comfort

QUIET OPERATION ALL MODELS	TROLL MODE (OPTIONAL*2) ALL MODELS	EASY START SYSTEM
-------------------------------	--	-------------------

Ecology & Economy

LEAN BURN ALL MODELS

ADDITIONAL FEATURES FOR DRIVE BY WIRE MODEL

Ease & Comfort

SELECTIVE ROTATION DF200AP DF175AP DF150AP	PRECISION CONTROL DF200AP DF175AP DF150AP	AUTOMATIC TRIM (OPTIONAL*2) DF200AP DF175AP DF150AP
---	--	---

*1 Available with SMD or SMG4

*2 Available with SMD, SMG4, or Troll Mode Switch Panel

SPECIFICATIONS / FEATURES P39

Flagship-GENI SERIES

V6 300-200HP

IN-LINE 4 200-150HP

IN-LINE 4 140-70HP

IN-LINE 3 60-25HP

PORTABLE 20-2.5HP

CARGO SERIES

IN-LINE 4 140-70HP

◆ Drive By Wire DF140BG / DF115BG

◆ Mechanical DF140B / DF115B, DF100B / DF90A / DF80A / DF70A



THE ULTIMATE OUTBOARD MOTOR

DF100B

For customers who use light weight boats and need quick acceleration (e.g. Compact size boat / Inflatable Boat)

Displacement(cm ³)	1,502
Weight(kg)	L : 157
Gear Ratio	2.59 : 1

2-STAGE GEAR REDUCTION

P8

This design makes a lower gear ratio possible, allowing it to turn a larger diameter high pitch propeller.

MULTI-FUNCTION TILLER HANDLE

P34



Suzuki's ergonomically designed tiller handle provides comfortable operation of the outboard with the left or right hand.

MAINTENANCE KIT

P34



Suzuki provides Maintenance Kits for speedy and reliable service. Each Kit comes with all the periodic maintenance parts necessary for each model.

Please ask your local Suzuki dealer for the contents of each kit and applicable models.



DF140BG
DF115BG

DRIVE BY WIRE

NEW DF140B
NEW DF115B

MECHANICAL

DF100B
DF90A / DF80A / DF70A

MECHANICAL

P12 P13

STANDARD FEATURES

Durability & Reliability

- ANTI CORROSION** (ALL MODELS)
- SELF-ADJUSTING TIMING CHAIN** (ALL MODELS)
- WATER DETECTING SYSTEM** (ALL MODELS)
- TILT LIMIT** (ALL MODELS)
- KEYLESS START SYSTEM** (OPTIONAL) (ALL DBW MODELS)
- SDSM** (OPTIONAL*1) (ALL MODELS)
- SUB WATER INLET** (OPTIONAL) (DF140BG/DF115BG, DF140B/DF115B)

Performance

- OFFSET DRIVESHAFT** (ALL MODELS)
- 2.59 GEAR RATIO** (ALL MODELS)

Ease & Comfort

- TROLL MODE** (OPTIONAL*2) (ALL MODELS)
- EASY START SYSTEM** (REMOTE CONTROL MODELS (STANDARD) TILLER HANDLE MODELS)

Ecology & Economy



LEAN BURN (ALL MODELS)

*1 Available with SMD or SMG4

*2 Available with SMD, SMG4, or Troll Mode Switch Panel

ADDITIONAL FEATURES FOR DRIVE BY WIRE MODEL

Ease & Comfort

- PRECISION CONTROL** (DF140BG, DF115BG)
- QUIET OPERATION** (DF140BG, DF115BG, DF140B/DF115B)
- AUTOMATIC TRIM** (OPTIONAL*2) (DF140BG, DF115BG)

SPECIFICATIONS / FEATURES P39 P40

Flagship-GEKI SERIES
V6 300-200HP
IN-LINE 4 200-150HP
IN-LINE 4 140-70HP
IN-LINE 3 60-25HP
PORTABLE 20-2.5HP
CARGO SERIES

IN-LINE 3 60-25HP

DF60AV
DF60A / DF50A / DF40A
DF30A / DF25A



STANDARD FEATURES

Durability & Reliability

ALL MODELS	ALL MODELS (including DF50A/40A)	ALL MODELS	(OPTIONAL*1) ALL MODELS	DF60A DF50A DF40A

Performance

Ease & Comfort

Ecology & Economy

DF60AV	(OPTIONAL*2) ALL MODELS		ALL MODELS

DF60AV

HIGH ENERGY ROTATION

DF60A / DF50A / DF40A

*1 Available with SMD or SMG4 *2 Available with SMD, SMG4, or Troll Mode Switch Panel



DF30A / DF25A

BATTERY-LESS EFI

Remote Control model available



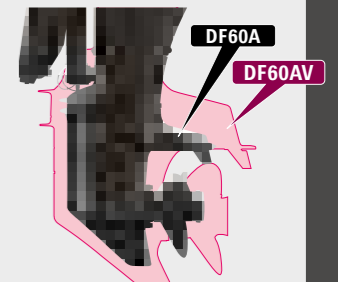
HIGH ENERGY ROTATION

These outboards are equipped with gears designed with a 2.42 gear ratio, which is larger than the standard model, in their lower units. When combined with a large 36cm (14-inch) propeller, the powerful system can deliver powerful thrust. This is ideal for heavy boats.

ADVANTAGE

- Powerful propulsion and precise manoeuvring even with heavy loads.
- Superior power to turn large diameter propellers.

DF60AV vs. DF60A size comparison



	DF60AV	DF60A
Gear Ratio	2.42	2.27

BATTERY-LESS Electric Fuel Injection

P11

This technology delivers quicker start, smoother operation, and strong acceleration without a battery.

BATTERY CHARGING KIT

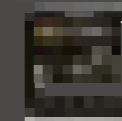
Optional equipment for charging battery.



TROLL MODE + SMG4

P32

Allows you to control your troll mode from the Multi-Function Gauge.



STANDARD FEATURES

Durability & Reliability

ALL MODELS	(OPTIONAL*1) ALL MODELS

Ecology & Economy

ALL MODELS	ALL MODELS

*1 Available with SMD or SMG4
SPECIFICATIONS / FEATURES P41

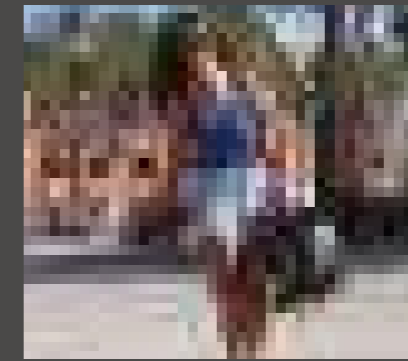
Flagship-GENI SERIES
V6 300-200HP
IN-LINE 4 200-150HP
IN-LINE 4 140-70HP
IN-LINE 3 60-25HP
PORTABLE 20-2.5HP
CARGO SERIES

PORTABLE 20-2.5HP

DF20A / DF15A / DF9.9B
DF6A / DF5A / DF4A / DF2.5



THE ULTIMATE
OUTBOARD MOTOR



OVERHEAD TANK

P11

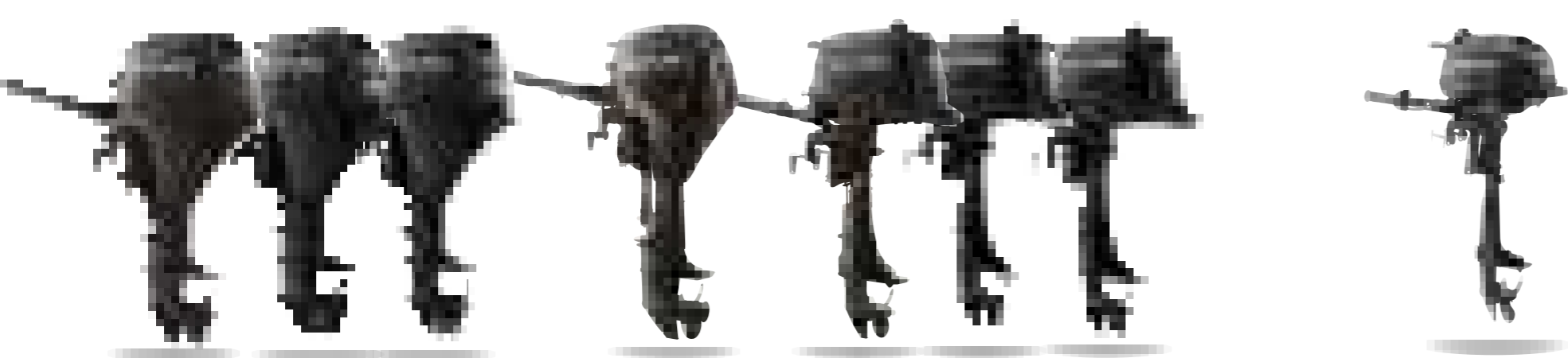
The integral overhead fuel tank and one-way valve delivers fuel supply using gravity.

THREE-WAY STORAGE

P10



The design allows the outboard to be removed from the boat and placed on any of its 3 sides for storage.



**DF20A / DF15A
/ DF9.9B**

BATTERY-LESS EFI

■ Remote control model available

DF9.9A

**DF6A / DF5A
/ DF4A**

THREE-WAY STORAGE

DF2.5

STANDARD FEATURES

Durability & Reliability



ANTI CORROSION

ALL MODELS



SUZUKI SDSM

(OPTIONAL *1)
DF20A
DF15A
DF9.9B

Ease & Comfort



THREE-WAY STORAGE
DF6A
DF5A
DF4A



OVERHEAD TANK
DF6A
DF5A
DF4A

Ecology & Economy



LEAN BURN
DF20A
DF15A
DF9.9B



BATTERY-LESS FUEL INJECTION
DF20A
DF15A
DF9.9B

*1 Available with SMD or SMG4

SPECIFICATIONS / FEATURES **P42**

Flagship-GEKI SERIES
V6 300-200HP
IN-LINE 4 200-150HP
IN-LINE 4 140-70HP
IN-LINE 3 60-25HP
PORTABLE 20-2.5HP
CARGO SERIES

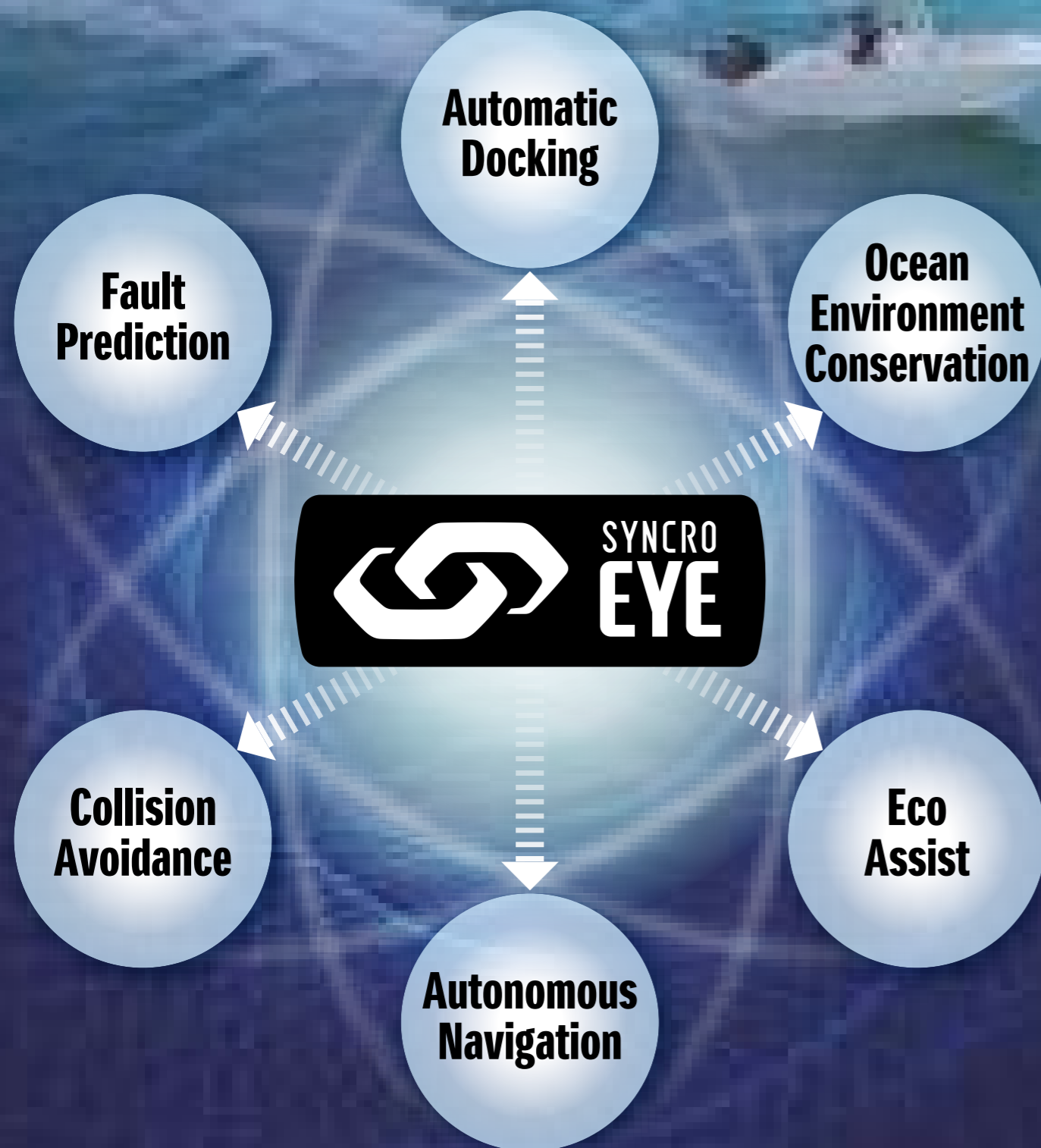


Integrated Control System



"SYNCRO-EYE" is a comprehensive system Suzuki has developed which "connects" various devices so that they may work together in synchronization. This innovative system will also improve the control technology of the boat by "sensing" various situations surrounding the boat and be compatible with future technology.

Suzuki's Technology Vision



PARTS & ACCESSORIES

THE ULTIMATE
OUTBOARD MOTOR

NEW NEW SUZUKI PRECISION CONTROL for Drive-By-Wire System

▶DF350A/325A/300B ▶DF300AP/250AP ▶DF200AP/175AP/150AP ▶DF140BG/115BG

Suzuki's best technology lies in the Suzuki Precision Control (S.P.C) for Drive-By-Wire System. This year, we bring the first full model change of the S.P.C. system, introducing new designs and functions to further enhance user experience and boating pleasure.



Find out more from our video

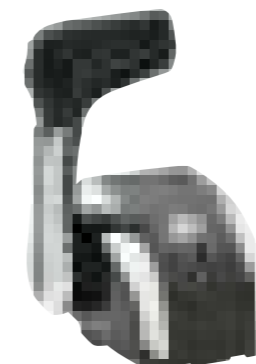
NEW FEATURES

- The new S.P.C. can control up to 6 outboard motors.
- Introducing new designs for remote control box, switch panels, and control panels
- Easy start for multi-motorboats: Users can start all motors in 1 action. Motors start in order from port to starboard.
- Automatic Trim is available by using with SMD or SMG4.
- 1 Lever Operation : This switch allows multiple motor operation with just 1 lever.(Dual top mount only)
- Integrated Emergency Switch (Flush Mount only)

NEW DESIGN

Remote Control Box

Integrated "Select" and "Throttle Only" switch (All)



Single Top Mount



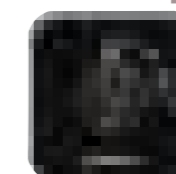
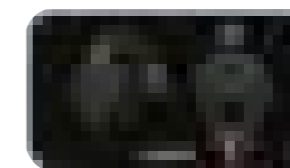
Dual Top Mount



Flush Mount

Switch Panel for regular key

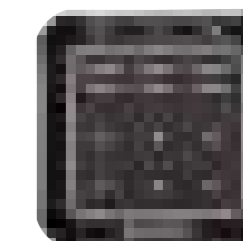
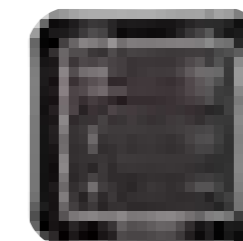
New designs, with mounting screws concealed



Switch Panel for Keyless Start System



Control Panel



NEW KEYLESS START SYSTEM*

▶DF350A/325A/300B ▶DF300AP/250AP ▶DF200AP/175AP/150AP ▶DF140BG/115BG

Start engine with access code transmitted from key fob. 1-push Start/Stop, and controls up to 6 engines. No ignition key necessary.

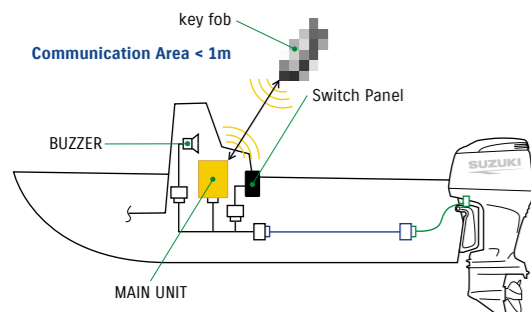
How to use

1. Stand nearby the console with the key fob.
2. Push START/STOP button to start engine.
3. To turn off the engine, push the button again.



NEW FEATURES

- Introducing new panel designs, and 2 new types: Horizontal-Type and Separate-Type
- The New system allows 1-push Start/Stop, and controls up to 6 engines. No ignition key necessary.



Find out more by watching our videos

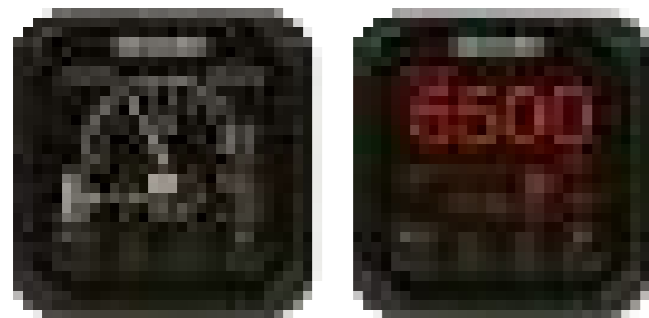
*Please check applicability with your local Suzuki dealer.

SUZUKI MULTI-FUNCTION GAUGE (SMG4)

▶DF9.9B AND UP

Suzuki Multi-Function Gauge provides all performance information in one gauge. Individual elements can also be emphasized to further enhance user friendliness.

SMG4



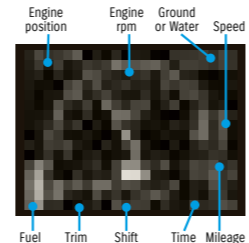
DAY MODE

NIGHT MODE

SPECIFICATIONS

- 3.5 Colour Display
- Size: 105mm(W)x105mm(H)x16mm(D)
- NMEA2000 output
- Shows both digital and analogue readouts, as well as day/night mode
- Displays the QR code for the Suzuki Diagnostic System
- Troll Mode Function: Allows user to control troll mode (only for 2019MY and later models adapted to troll mode)

ANALOG TACHO & SPEED MODE



Troll Mode



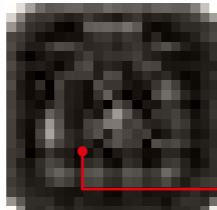
NEW FEATURES

Multilingual Menu



English, French, Italian, German, Spanish, Swedish, Norwegian, Finnish, Dutch, Portuguese, Danish, Russian, Japanese

Automatic Trim Function



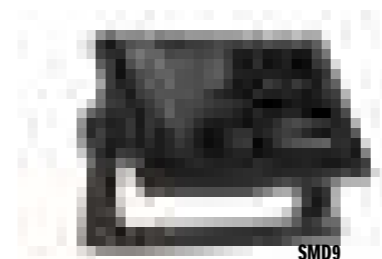
Automatically adjusts trim angle



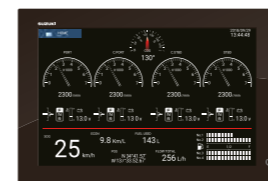
SUZUKI MULTI-FUNCTION DISPLAY (SMD)

▶DF9.9B AND UP

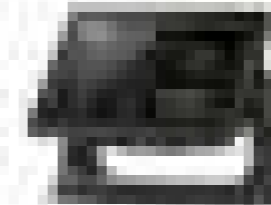
SUZUKI MULTI-FUNCTION DISPLAY is available in 3 screen sizes: 7, 9 and 12 inch



SMD9



SMD12

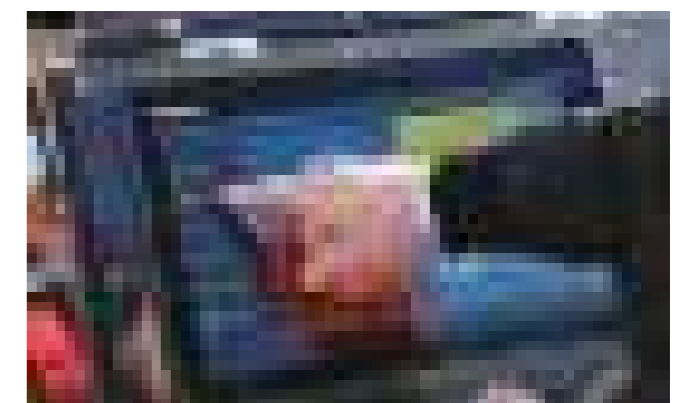


SMD7



KEY FEATURES

- Intuitive, easy, smooth operation with an entire multi touch screen interface. Total control at your fingertips
- Bonded all-glass LCD, sunlight viewable screen with impressive brightness, and a luxurious look
- Ease of operation with all Suzuki engine information integrated on one display
- All latest and unique technologies such as TruEcho Chirp™, Accu-Fish™, RezBoost™ combined in one display provide you the most exciting fishing experience



SUZUKI DIAGNOSTIC SYSTEM MOBILE

▶DF9.9B AND UP*

*Available with SMD or SMG



Suzuki Diagnostic System Mobile (SDS Mobile) app allows customers and dealers easy access to engine data.

*SDS Mobile is free of charge

How to use

1. The Outboard converts engine data into a QR code displayed on the Multi-Function Gauge or Multi-Function Display.
2. Customer can use their smartphone to scan the QR code with the SDS Mobile App. The engine data will be stored on their smartphone.
3. Customer can then send the engine data via email to their Suzuki Dealer.



Find out more at our Global Website



Apple and the Apple logo are trademarks of Apple Inc., registered in the U.S. and other countries. App Store is a service mark of Apple Inc., registered in the U.S. and other countries.



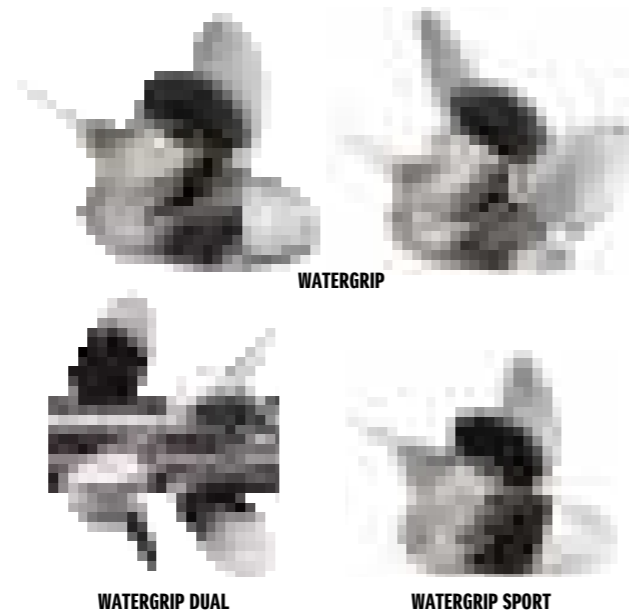
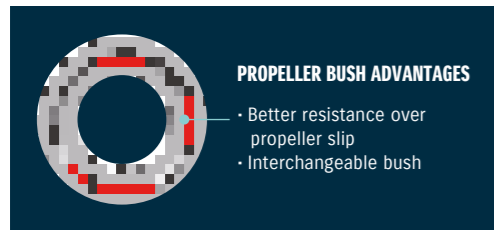
Google Play and the Google Play logo are trademarks of Google LLC.

PARTS & ACCESSORIES

WATERGRIP PROPELLER

WATERGRIP is a stainless-steel propeller series offering accurate response to your operation. With efficient conversion of engine power into propulsion, this propeller series meets our customers' demand for bigger, faster, more powerful outboards.

The WATERGRIP propeller series employs a new interchangeable and square shaped propeller bush that minimizes power loss in delivery.



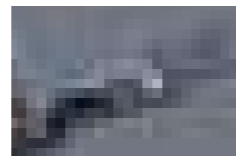
MULTI-FUNCTION TILLER HANDLE

▶DF115BT ▶DF100B/DF70A-90A ▶DF60A/50AV/60AV ▶DF40A/50A

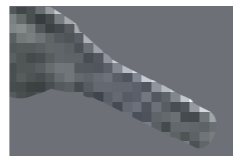
Main features



Tachometer* with warning indicators



Three-position angle adjustable bracket



Power trim & tilt switch* and throttle grip friction adjuster



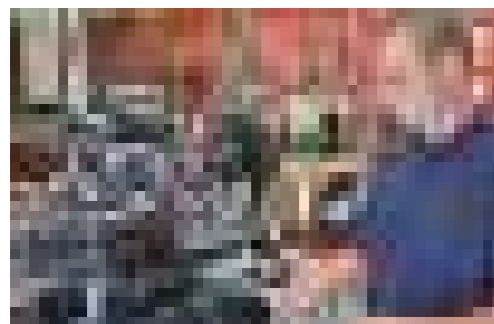
Troll mode switch*
 • Activates SUZUKI Troll Mode System and controls RPM from idling engine speed up to 1200rpm at every 50rpm.

*Tachometer, Power trim & tilt switch and Troll mode switch are not available for 90AWQH.

MAINTENANCE KITS

Suzuki provides Maintenance Kits for speedy and reliable service. Each Kit comes with all the periodic maintenance parts necessary for each model.

Please ask your local Suzuki dealer for the contents of each kit and applicable models.



THE ULTIMATE
 LIFE ENJOYMENT

MAINTENANCE KITS

Keep your outboard 100% Suzuki

Maintaining your ultimate outboard with Suzuki Genuine Parts couldn't be easier. We offer complete maintenance kits on a range of Suzuki outboards. Each kit has the complete range of Suzuki Genuine Parts required for servicing your engine. There are 27 individual kits available 'off the shelf' that are application specific for each engine category.

Continuously evolving over the decades, Suzuki has a rich, proud history knowing no bounds.

D55

The first Suzuki Outboard, D55, was marketed.



SPECIFICATIONS

2-stroke
cylinder : 1
displacement : 98cm³
maximum output : 4.0kW (5.5PS)

1965

1977

DT200 Exanté

DT200 Exanté won the first "Most Innovative Products" award from the show's sponsor, the National Marine Manufacturers association (NMMA).



SPECIFICATIONS

2-stroke
cylinder : V6
displacement : 2,693cm³
maximum output : 147.1kW (200PS)

1987

1994

DF60

DF60 and DF70, the first Suzuki 4-stroke outboards with Electric Fuel Injection System, were marketed. DF60 and DF70 won the "NMMA Innovation Award"



SPECIFICATIONS

4-stroke
cylinder : 4
displacement : 1,298cm³
maximum output : 44.1kW (60PS)

1997

2003

DF300

DF300 is the industry's first 220.7kW(300PS) V6 4-stroke outboard, and the first outboard to utilize an electronic remote control. DF300 is the winner of the "NMMA 2006 Innovation Award".



SPECIFICATIONS

4-stroke
cylinder : V6
displacement : 4,028cm³
maximum output : 220.7kW (300PS)

2006

2014

DF350A

Suzuki introduces DF350A 257.4kW(350PS) V6 4-stroke outboard. New Flagship Model has exclusive features such as the innovative Suzuki Dual Prop System. DF350A is the winner of the "NMMA 2017 Innovation Award".



SPECIFICATIONS

4-stroke
cylinder : V6
displacement : 4,390cm³
maximum output : 257.4kW (350PS)

2017

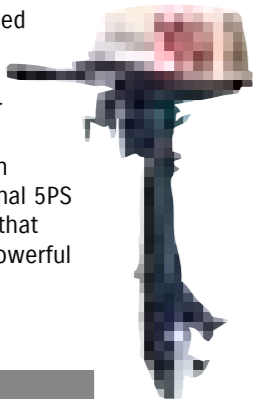
100th Anniversary of Suzuki's Long History

With the rich history of 100 years, and the experience and knowledge of automobile, motorcycle, and outboard motor development, Suzuki has come to provide technology and service unprecedented in the marine business. Combined with the "Yamaika" spirit, Suzuki has grown to create innovation and satisfaction to customers around the world.

2020

DT5

The DT5 was released as a compact 5PS outboard motor. Mounted 2-cylinder engine on, while 1-cylinder had been used for conventional 5PS outboard motor at that time, it delivered powerful propulsion.



SPECIFICATIONS

2-stroke
cylinder : 2
displacement : 113cm³
maximum output : 3.7kW (5PS)

DF9.9

Suzuki introduced DF9.9 and DF15, their first 4-stroke outboards.



SPECIFICATIONS

4-stroke
cylinder : 2
displacement : 302cm³
maximum output : 7.3kW (9.9PS)

DF250

DF250 is the industry's first 184kW(250PS) 4-stroke outboard. DF200/225/250, the first Suzuki 4-stroke V6 outboards were revealed. DF250 won the "NMMA Innovation Award" at the 2003 International Miami Boat Show.

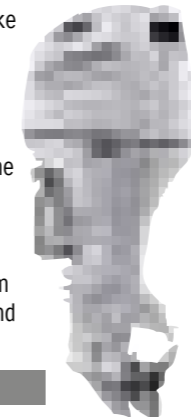


SPECIFICATIONS

4-stroke
cylinder : V6
displacement : 3,614cm³
maximum output : 184.0kW (250PS)

DF200AP

DF200A/DF200AP are 4-stroke outboard motors based on in-line 4-cylinder engine of the DF175. In addition, DF200AP has adopted the Suzuki Selective Rotation, the world's first technology to integrate both regular and counter rotations of a propeller. The control system utilizes electronic throttle and shift systems.

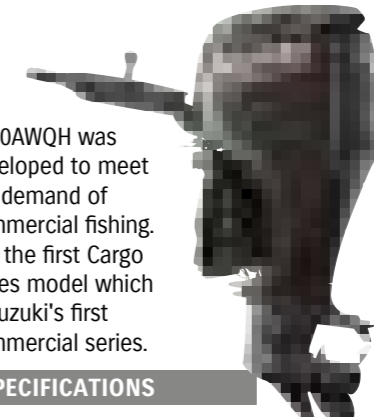


SPECIFICATIONS

4-stroke
cylinder : In-line4
displacement : 2,867cm³
maximum output : 147.1kW(200PS)

DF90AWQH

DF90AWQH was developed to meet the demand of commercial fishing. It is the first Cargo series model which is Suzuki's first commercial series.



SPECIFICATIONS

4-stroke
cylinder : In-line4
displacement : 1,502cm³
maximum output : 66.2kW(90PS)

DF140BG

DF140BG is the world's first drive by wire model in 4-stroke 140PS. It inherits the reliability & fuel efficiency of DF140A, and cutting-edge technologies realise higher durability & performance.



SPECIFICATIONS

4-stroke
cylinder : In-line4
displacement : 2,045cm³
maximum output : 84.6kW(140PS)

SPECIFICATIONS & FEATURES



SPECIFICATIONS

	350A	325A	300B	300AP	250AP	
Starting System	Electric			Electric		Starting System
Recommended Transom Height (mm)	X: 635 XX: 762			L: 508 *3 X: 635 XX: 762		Recommended Transom Height (mm)
Weight kg*1	X: 330 XX: 338			L: 284 X: 290 XX: 299		Weight kg*1
Valve Train	DOHC 24-Valve			DOHC 24-Valve		Valve Train
Valve Train Drive	Chain			Chain		Valve Train Drive
Displacement (cm³)	4,390			4,028		Displacement (cm³)
Maximum Output (kw)	257.4	239.0	220.7	220.7	183.9	Maximum Output (kw)
Bore and Stroke (mm)	98 × 97			98 × 89		Bore and Stroke (mm)
Operation Range (rpm)	5,700-6,300	5,300-6,300		5,700-6,300	5,500-6,100	Operation Range (rpm)
Fuel Delivery System	Electronic Fuel Injection			Electronic Fuel Injection		Fuel Delivery System
Oil Pan Capacity (L)	8.0			8.0		Oil Pan Capacity (L)
Alternator	12V 54A			12V 54A		Alternator
Trim Type	Power Trim and Tilt			Power Trim and Tilt		Trim Type
Gear Ratio	2.29:1			2.08:1		Gear Ratio
Control System	Digital			Digital		Control System
Recommended Fuel*2	RON94/AKI89	RON91/AKI87		RON94/AKI89		Recommended Fuel*2
Propeller Selection (pitch)	12"-31.5"			15"-27.5"(R/R) 17"-26"(C/R)		Propeller Selection (pitch)

All propellers are the 3-blade type. please inquire at your local dealer for details of the propeller.

*1: Dry Weight: including battery cable, not including propeller and engine oil. *2: RON: Research method (minimum octane rating)

AKI: (R+M)/2 method (minimum pump octane rating), (Only North America) *3: DF300AP only

200AP	175AP	150AP	140BG	115BG	140B	115B
Electric			Electric		Electric	
L: 508 X: 635			L: 508 X: 635		L: 508 X: 635	
L: 236 X: 241			L: 188 X: 192	L: 190 X: 194	L: 186 X: 190	L: 188 X: 192
DOHC 16-Valve			DOHC 16-Valve		DOHC 16-Valve	
Chain			Chain		Chain	
2,867			2,045		2,045	
147.1	128.7	110.3	103.0	84.6	103.0	84.6
97 × 97			86 × 88		86 × 88	
5,500-6,100		5,000-6,000	5,700-6,300	5,000-6,000	5,700-6,300	5,000-6,000
Electronic Fuel Injection			Electronic Fuel Injection		Electronic Fuel Injection	
8.0			5.5		5.5	
12V 44A			12V 40A		12V 40A	
Power Trim and Tilt			Power Trim and Tilt		Power Trim and Tilt	
2.50:1			2.59:1		2.59:1	
Digital			Digital		Mechanical	
RON91/AKI87			RON91/AKI87		RON91/AKI87	
15"-27.5"(R/R) 17"-26"(C/R)			15"-25"(R/R) 17"-23"(C/R)		15"-25"(R/R) 17"-23"(C/R)	

●=Standard Equip. ○=Optional Equip.

FEATURES

	350A	325A	300B	300AP	250AP	
Black	●	●	●	●	●	BODY COLOUR
SUZUKI DUAL LOUVER SYSTEM	●	●	●	●	●	SUZUKI DUAL LOUVER SYSTEM
SELF-ADJUSTING TIMING CHAIN	●	●	●	●	●	SELF-ADJUSTING TIMING CHAIN
SUZUKI ANTI-CORROSION SYSTEM	●	●	●	●	●	SUZUKI ANTI-CORROSION SYSTEM
OVER-REV. LIMITER	●	●	●	●	●	OVER-REV. LIMITER
TILT LIMIT SYSTEM	●	●	●	●	●	TILT LIMIT SYSTEM
WATER DETECTING SYSTEM	●	●	●	●	●	WATER DETECTING SYSTEM
FRESH WATER FLUSHING SYSTEM	●	●	●	●	●	FRESH WATER FLUSHING SYSTEM
DUAL WATER INLET	●	●	●	●	●	DUAL WATER INLET
SUB WATER INLET						SUB WATER INLET
NEW KEYLESS START SYSTEM	○	○	○	○	○	NEW KEYLESS START SYSTEM
SUZUKI DIAGNOSTIC SYSTEM MOBILE*1	○	○	○	○	○	SUZUKI DIAGNOSTIC SYSTEM MOBILE*1
OFFSET DRIVESHAFT	●	●	●	●	●	OFFSET DRIVESHAFT
2-STAGE GEAR REDUCTION SYSTEM	●	●	●	●	●	2-STAGE GEAR REDUCTION SYSTEM
HIGH ENERGY ROTATION						HIGH ENERGY ROTATION
SUZUKI DUAL PROP SYSTEM	●	●	●	●	●	SUZUKI DUAL PROP SYSTEM
VARIABLE VALVE TIMING SYSTEM	●	●	●	●	●	VARIABLE VALVE TIMING SYSTEM
MULTI-STAGE INDUCTION SYSTEM						MULTI-STAGE INDUCTION SYSTEM
SUZUKI SELECTIVE ROTATION				●	●	SUZUKI SELECTIVE ROTATION
SUZUKI PRECISION CONTROL	●	●	●	●	●	SUZUKI PRECISION CONTROL
QUIET OPERATION	●	●	●			QUIET OPERATION
OVERHEAD TANK						OVERHEAD TANK
AUTOMATIC TRIM SYSTEM*3	○	○	○	○	○	AUTOMATIC TRIM SYSTEM*3
THREE-WAY STORAGE						THREE-WAY STORAGE
SUZUKI TROLL MODE SYSTEM*2	○	○	○	○	○	SUZUKI TROLL MODE SYSTEM*2
SUZUKI EASY START SYSTEM	●	●	●	●	●	SUZUKI EASY START SYSTEM
SUZUKI LEAN BURN CONTROL SYSTEM	●	●	●	●	●	SUZUKI LEAN BURN CONTROL SYSTEM
DUAL INJECTOR	●	●	●			DUAL INJECTOR
O ₂ SENSOR FEEDBACK CONTROL SYSTEM				●	●	O ₂ SENSOR FEEDBACK CONTROL SYSTEM
SHALLOW WATER DRIVE						SHALLOW WATER DRIVE

*1: available by using with SMD/SMG4 *2: available by using with SMD/SMG4/Troll Mode Switch Panel *3: available by using with SMG4/SMD, and New S.P.C

200AP	175AP	150AP	140BG	115BG	140B	115B
●	●	●	●	●	●	●
●	●	●	●	●	●	●
●	●	●	●	●	●	●
●	●	●	●	●	●	●
●	●	●	●	●	●	●
●	●	●	●	●	●	●
			○	○	○	○
			○	○	○	○
●	●	●	●	●	●	●
●	●	●	●	●	●	●
●	●	●		●		
●	●	●	●	●	●	●
○	○	○	○	○		
○	○	○	○	○	○	○
●	●	●	●	●	●	●
●	●	●	●	●	●	●
●	●	●	●	●	●	●

SPECIFICATIONS & FEATURES

SPECIFICATIONS

	100A	100B	90A	80A	70A
Starting System	Electric	Electric			
Recommended Transom Height (mm)	L: 508 X: 635	L: 508 X: 635			
Weight kg*1	L: 183 X: 187	L: 157 X: 161	L: 156 X: 160		
Valve Train	DOHC 16-Valve	DOHC 16-Valve			
Valve Train Drive	Chain	Chain			
Displacement (cm³)	2,045	1,502			
Maximum Output (kw)	73.6	73.6	66.2	58.8	51.5
Bore and Stroke (mm)	86 × 88	75 × 85			
Operation Range (rpm)	5,000-6,000	5,700-6,300		5,000-6,000	
Fuel Delivery System	Electronic Fuel Injection	Electronic Fuel Injection			
Oil Pan Capacity (L)	5.5	4.3			
Alternator	12V 40A	12V 27A			
Trim Type	Power Trim and Tilt	Power Trim and Tilt			
Gear Ratio	2.59:1	2.59:1			
Control System	Mechanical	Mechanical			
Recommended Fuel*2	RON91/AKI87	RON91/AKI87			
Propeller Selection(pitch)	15"-25"(R/R) 17"-23"(C/R)	13"-25"(R/R)			

All propellers are the 3-blade type. please inquire at your local dealer for details of the propeller.

*1: Dry Weight: Including battery cable, not including propeller and engine oil. *2: RON: Research method (minimum octane rating) AKI: (R+M)/2 method(minimum pump octane rating), (Only North America)

	60A/50A/ 40A	60AV	30AT/ 25AT	30A/25A	
Starting System	Electric		Electric/Manual	Electric*6	Manual
Recommended Transom Height (mm)	S: 381 L: 508 X: 635*3	L: 508 X: 635*3	S: 381 L: 508	S: 381	S: 381 L: 508
Weight kg*1	S: 102 L: 104 X: 107*3	L: 115 X: 118*3	S: 71 L: 72	S: 65	S: 62 L: 63
Valve Train	DOHC 12-Valve		OHC		
Valve Train Drive	Chain		Belt		
Displacement (cm³)	941		490		
Maximum Output (kw)	DF60A: 44.1 DF50A: 36.8 DF40A: 29.4	DF60A: 44.1 DF50A: 36.8 DF40A: 29.4	DF30A: 22.1 DF25A: 18.4		
Bore and Stroke (mm)	72.5 × 76		60.4 × 57		
Operation Range (rpm)	DF60A/50A: 5,300-6,300 DF40A: 5,000-6,000	DF60A/50A: 5,300-6,300 DF40A: 5,000-6,000	DF30A: 5,300-6,300 DF25A: 5,000-6,000		
Fuel Delivery System	Electronic Fuel Injection		Battery-less Electronic Fuel Injection		
Oil Pan Capacity (L)	2.7		1.5		
Alternator	12V 19A		12V 14A		
Trim Type	Power Trim and Tilt		Power Trim and Tilt	Manual Trim and Tilt	
Gear Ratio	2.27:1	2.42:1	2.09:1		
Control System	Mechanical		Mechanical		
Recommended Fuel*2	RON91/AKI87		RON91/AKI87		
Propeller Selection(pitch)	9"-17"		9"-15"		

*3: DF60A only. *4: DF25ATH only. *5: DF30AQH only. *6: DF25AE only.

FEATURES

	100B	90A	80A	70A		70A
BODY COLOUR Black	●	●	●	●	BODY COLOUR Black	●
SUZUKI DUAL LOUVER SYSTEM	●	●	●	●	SUZUKI DUAL LOUVER SYSTEM	●
SELF-ADJUSTING TIMING CHAIN	●	●	●	●	SELF-ADJUSTING TIMING CHAIN	●
SUZUKI ANTI-CORROSION SYSTEM	●	●	●	●	SUZUKI ANTI-CORROSION SYSTEM	●
OVER-REV. LIMITER	●	●	●	●	OVER-REV. LIMITER	●
TILT LIMIT SYSTEM	●	●	●	●	TILT LIMIT SYSTEM	●
WATER DETECTING SYSTEM	●	●	●	●	WATER DETECTING SYSTEM	●
FRESH WATER FLUSHING SYSTEM	●	●	●	●	FRESH WATER FLUSHING SYSTEM	●
DUAL WATER INLET					DUAL WATER INLET	
SUB WATER INLET					SUB WATER INLET	
NEW KEYLESS START SYSTEM					NEW KEYLESS START SYSTEM	
SUZUKI DIAGNOSTIC SYSTEM MOBILE*1	○	○	○	○	SUZUKI DIAGNOSTIC SYSTEM MOBILE*1	○
OFFSET DRIVESHAFT	●	●	●	●	OFFSET DRIVESHAFT	●
2-STAGE GEAR REDUCTION SYSTEM	●	●	●	●	2-STAGE GEAR REDUCTION SYSTEM	●
HIGH ENERGY ROTATION					HIGH ENERGY ROTATION	
SUZUKI DUAL PROP SYSTEM					SUZUKI DUAL PROP SYSTEM	
VARIABLE VALVE TIMING SYSTEM					VARIABLE VALVE TIMING SYSTEM	
MULTI-STAGE INDUCTION SYSTEM					MULTI-STAGE INDUCTION SYSTEM	
SUZUKI SELECTIVE ROTATION					SUZUKI SELECTIVE ROTATION	
SUZUKI PRECISION CONTROL					SUZUKI PRECISION CONTROL	
QUIET OPERATION					QUIET OPERATION	
OVERHEAD TANK					OVERHEAD TANK	
AUTOMATIC TRIM SYSTEM**4					AUTOMATIC TRIM SYSTEM**4	
THREE-WAY STORAGE					THREE-WAY STORAGE	
SUZUKI TROLL MODE SYSTEM*2	○	○	○	○	SUZUKI TROLL MODE SYSTEM*2	○
SUZUKI EASY START SYSTEM	●	●	●	●	SUZUKI EASY START SYSTEM	●
SUZUKI LEAN BURN CONTROL SYSTEM	●	●	●	●	SUZUKI LEAN BURN CONTROL SYSTEM	●
DUAL INJECTOR					DUAL INJECTOR	
O₂ SENSOR FEEDBACK CONTROL SYSTEM					O₂ SENSOR FEEDBACK CONTROL SYSTEM	
SHALLOW WATER DRIVE					SHALLOW WATER DRIVE	●

*1: available by using with SMD/SMG4 *2: available by using with SMD/SMG4/Troll Mode Switch Panel *3: DF60A only. *4: available by using with SMG4/SMD, and New S.P.C

●=Standard Equip. ○=Optional Equip.

60A/50A/ 40A	60AV	30AT/ 25AT	30A/25A
●	●	●	●
●	●		
●	●	●	●
●	●	●	●
●	●		
●*3	●		
●	●	●	●
○	○	○	○
	●		
○	○		
●	●	●	●
●	●	●	●
			●

SPECIFICATIONS & FEATURES



SPECIFICATIONS

	20AT/ 15AT/9.9BT	20ATH/ 15ATH/9.9BTH	20AR/ 15AR/9.9BR	20A/15A/ 9.9B	9.9A/8A	6A/5A/4A	2.5
Starting System	Electric/Manual		Electric	Electric Manual	Manual	Manual	Manual
Recommended Transom Height (mm)	S: 381*3 L: 508 X: 635*4	S: 381*5 L: 508 X: 635*5	S: 381 L: 508		S: 381 L: 508	S: 381 L: 508	S: 381 L: 508
Weight kg*1	S: 52.5*3 L: 54.5 X: 57*4	S: 53.5*5 L: 55.5 X: 58*5	S: 47 L: 48	S: 48 L: 49	S: 44 L: 45	S: 39 L: 41.5	S: 24 L: 25
Valve Train	OHC		OHC		OHC	OHV	OHV
Valve Train Drive	Belt		Belt		Belt	Belt	Belt
Displacement (cm³)	327		327		208	138	68
Maximum Output (kw)	DF20A: 14.7 DF15A: 11.0		DF20A: 14.7 DF15A: 11.0 DF9.9B: 7.3		DF9.9A: 7.3	DF6A: 4.4 DF5A: 3.7 DF4A: 2.9	1.8
Bore and Stroke (mm)	60,4 × 57		60,4 × 57		51 × 51	60,4 × 48	48 × 38
Operation Range (rpm)	DF20A: 5,300-6,300 DF15A: 5,000-6,000		DF20A: 5,300-6,300 DF15A: 5,000-6,000 DF9.9B: 4,700-5,700		DF9.9A: 5,200-6,200	DF6A: 4,750-5,750 DF5A: 4,500-5,500 DF4A: 4,000-5,000	5,250-5,750
Fuel Delivery System	Battery-less Electronic Fuel Injection		Battery-less Electronic Fuel Injection		Carburetor	Carburetor	Carburetor
Oil Pan Capacity (L)	1.0		1.0		0.8	0.7	0.38
Alternator	12V 12A		12V 12A	12V 6A	12V 6A	12V 5A (op.)	-
Trim Type	Power Tilt		Manual Trim and Tilt		Manual Trim and Tilt	Manual Trim and Tilt	Manual Trim and Tilt
Gear Ratio	2.08:1		2.08:1		2.08:1	1.92:1	2.15:1
Control System	Mechanical		Mechanical		Mechanical	Mechanical	Mechanical
Recommended Fuel*2	RON91/AKI87		RON91/AKI87		RON91/AKI87	RON91/AKI87	RON91/AKI87
Propeller Selection(pitch)	7"-12"		7"-12"		7"-11"	6"-7"	5.3/8"

All propellers are the 3-blade type. please inquire at your local dealer for details of the propeller.

*1: Dry Weight: Including battery cable, not including propeller and engine oil. *2: RON: Research method (minimum octane rating) AKI: (R+M)/2 method(minimum pump octane rating), (Only North America)

*3: DF20AT/DF9.9BT only. *4: DF9.9BT only. *5: DF9.9BTH only.

FEATURES

●=Standard Equip. ○=Optional Equip.

	20AT/ 15AT	20ATH/ 15ATH/9.9BTH	20AR/ 15AR/9.9BR	20A/15A/ 9.9B	9.9A/8A	6A/5A/4A	2.5
BODY COLOUR Black	●	●	●	●	●	●	●
SUZUKI DUAL LOUVER SYSTEM							
SELF-ADJUSTING TIMING CHAIN							
SUZUKI ANTI-CORROSION SYSTEM	●	●	●	●	●	●	●
OVER-REV. LIMITER	●	●	●	●	●	●	●
TILT LIMIT SYSTEM							
WATER DETECTING SYSTEM							
FRESH WATER FLUSHING SYSTEM	●	●	●	●	●	●	
DUAL WATER INLET							
SUB WATER INLET							
NEW KEYLESS START SYSTEM							
SUZUKI DIAGNOSTIC SYSTEM MOBILE*1	○	○	○	○			
OFFSET DRIVESHAFT							
2-STAGE GEAR REDUCTION SYSTEM							
HIGH ENERGY ROTATION							
SUZUKI DUAL PROP SYSTEM							
VARIABLE VALVE TIMING SYSTEM							
MULTI-STAGE INDUCTION SYSTEM							
SUZUKI SELECTIVE ROTATION							
SUZUKI PRECISION CONTROL							
QUIET OPERATION							
OVERHEAD TANK						●	
AUTOMATIC TRIM SYSTEM*6							
THREE-WAY STORAGE						●	
SUZUKI TROLL MODE SYSTEM*2							
SUZUKI EASY START SYSTEM							
SUZUKI LEAN BURN CONTROL SYSTEM	●	●	●	●			
DUAL INJECTOR							
O₂ SENSOR FEEDBACK CONTROL SYSTEM							
SHALLOW WATER DRIVE			●	●	●	●	

*1: available by using with SMD/SMG4 *2: available by using with SMD/SMG4/Troll Mode Switch Panel *3: DF20AT/9.9BT only. *4: DF20ATH/9.9BTH only. *5: DF6A only. *6: available by using with SMG4/SMD, and New S.P.C